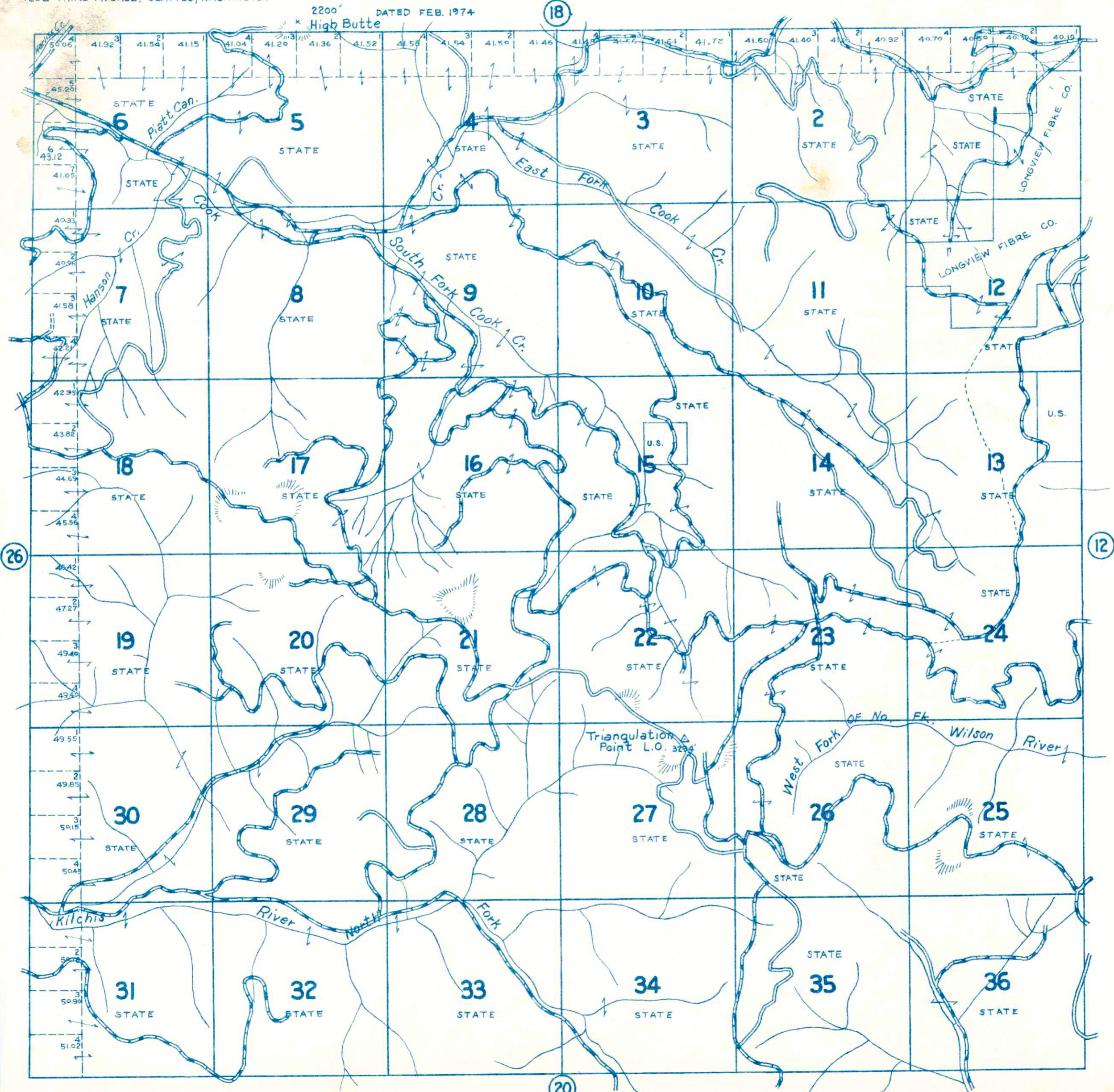


# TOWNSHIP 2 N., RANGE 8 W.W.M. TILLAMOOK COUNTY ORE.

2200' DATED FEB. 1974

(18)



Reproduction in whole or part for personal use or resale is prohibited by law.

### LEGEND

- STATE HWY. (6) U.S. HWY. (10)
- PAVED HIGHWAYS
- IMPROVED DIRT ROADS
- DIRT ROADS
- INFERIOR ROADS
- RAILROADS
- TRAILS
- INTERMITTENT CREEKS

(20)